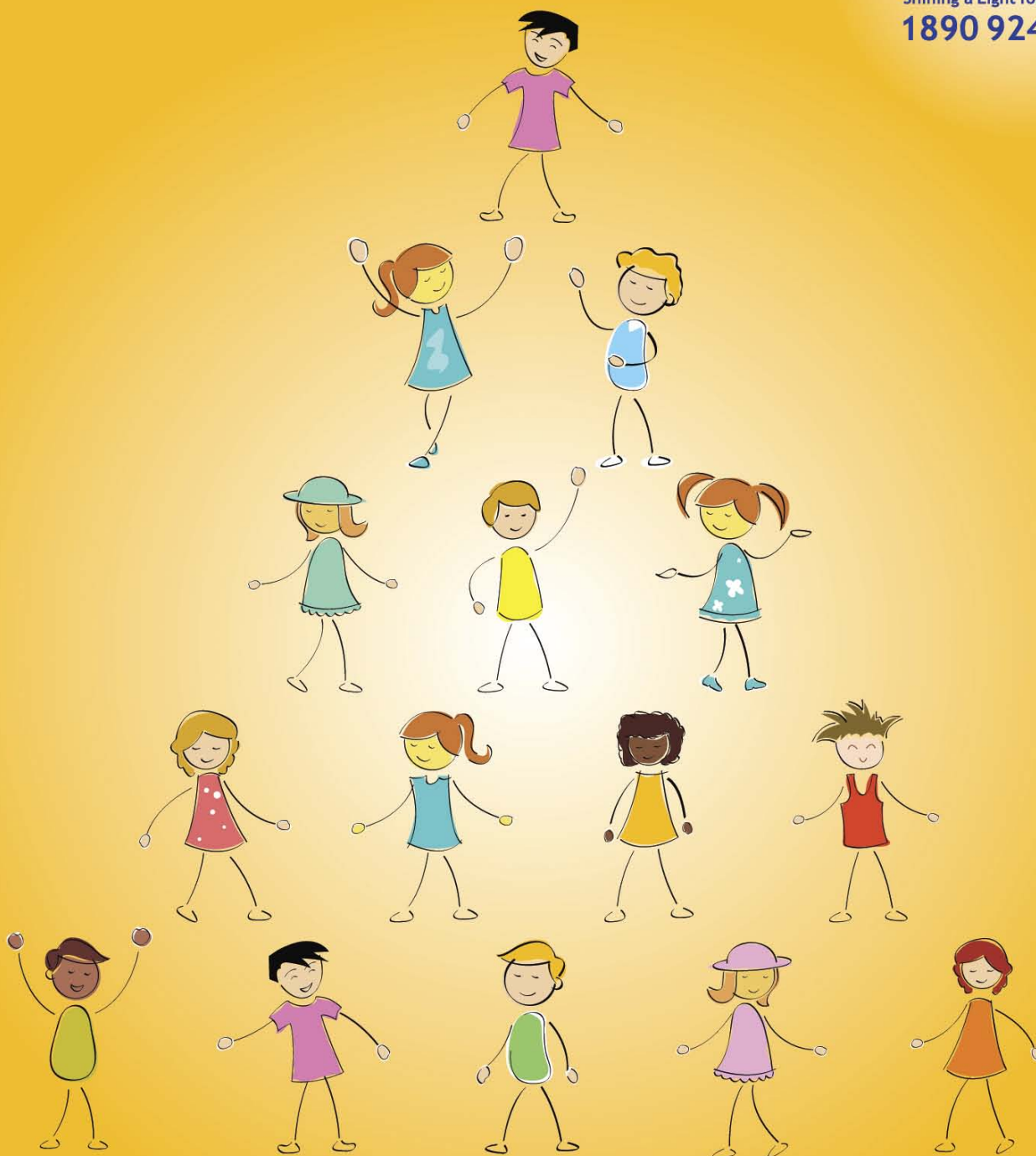




**CARI**

Shining a Light for Children

1890 924 567



# Annual Report

# 2011

# Chairman's Remarks: Next Steps for CARI

- Richard P. Treacy

In 2011, CARI undertook and completed two major pieces of strategic work. Firstly, we set about the preparation of a new Strategic Plan and consulted with staff, clients and stakeholders. The input from our clients proved to be valuable and largely affirmative. In particular, the quality of our therapists and the atmosphere of our houses were complimented. Access and availability needed to be increased according to our clients.

The new Plan has adopted six major goals to be progressed across its four year life span; some resource dependent, some not. These goals are as follows:

- Develop the CARI organisation to better deliver existing services.
- Raise the CARI profile nationally.
- Funding to grow and operate with security.
- Maintain and improve existing services.
- Place CARI at the centre of a national service structure for child sexual abuse.
- Expand and broaden the services CARI provides.

We are strengthening our Board and recruiting a wider mix of skill sets to support the organisation in achieving these objectives at a time of declining resources. My thanks are due to the Board Members who give their time entirely voluntarily and have supported me in guiding and directing the organisation and participated actively in both the strategic and fundraising reviews conducted in 2011. In addition I wish to record my thanks to our management team, Chief Executive Mary D. Flaherty and National Clinical Director Dr. Niall Muldoon who have ensured that CARI continued to provide increased level of high quality services with reduced resources.

I can hardly do better than present here the views of those who have come to CARI to deal with the trauma of child sexual abuse. We are reassured that we are staying true to our mission when we hear just some of their voices.

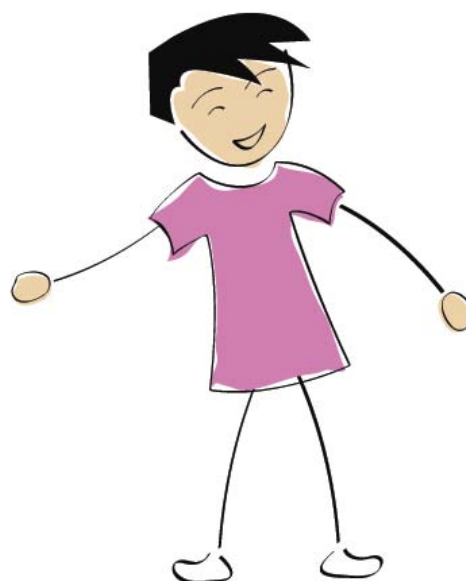
*"[CARI] was the most valuable asset we had in dealing with our situation."*

*"CARI was a last resort but my daughter came on in leaps and bounds"*

*"The whole family would have fallen apart if we hadn't had the help."*

*"For myself personally (mother) the most valuable thing was working with my therapist - it was amazing. It gave me the tools and ability to deal with what was happening and my own issues from years gone by."*

Richard Treacy



## Curate's Egg or Catch 22

Reviewing the year I can say it was like the curate's egg - good in parts. On the one hand, significant work was done on strategy, policies and codes of good practice. On the other hand, the financial environment was throwing up major challenges. It was a year of major political change; the change of government had a significant and largely positive impact on the agenda for children. This arose from the appointment of two Ministers with strong history of knowledge and commitment to children's issues and the legal and child protection systems to two key Ministries that of Justice and the new Department of Children.

## New Ministry - new Agency formed

Ireland's first full Minister for Children and Youth Affairs, Frances Fitzgerald, made two key early decisions. She committed to re-visiting the wording of the proposed referendum on Children's Rights. This was welcomed by CARI along with the Saving Childhood Group of NGO's. Secondly, she announced that a new agency was being formed and that child protection services would move from the HSE to this new agency. Gordon Jeyes was recruited and gave new energy and leadership to the previously fragmented and uncoordinated child protection services. This is where the Catch 22 arises. At a time when we have no strong and coherent legislative leadership - we have no resources for children's services (especially in the voluntary sector) are experiencing universal cuts, amounting to close on twenty per cent in incremental cuts since 2009.

Gordon Jeyes undertook a review of existing services and the 2011 Report (2011) recommended that CARI work together to

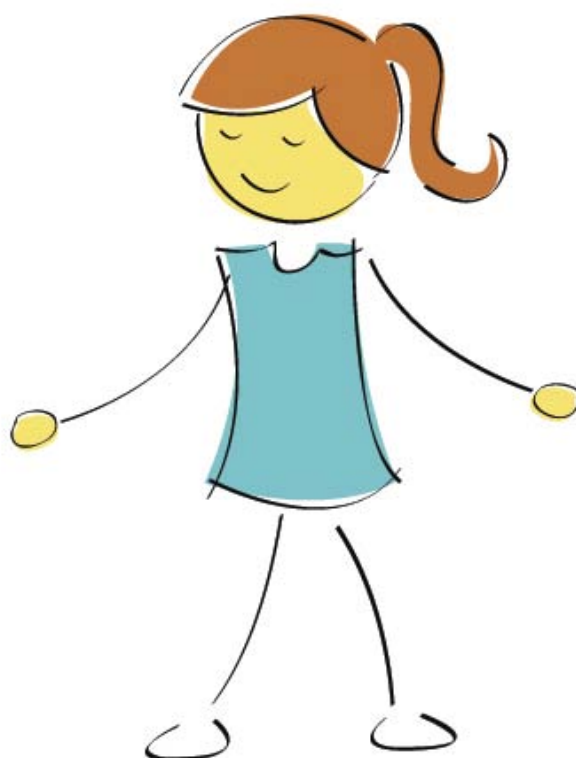
provide a nationwide service for children. Again, Catch 22 loomed - in those areas that have services, there are long waiting lists but yet CARI and the HSE, with ever reducing resources, are being asked to spread those resources thinner to reach the additional hundreds of children in those areas not currently served by specialised centres. It is, at best, a nightmare task and at worst an impossible one. **Additional funding is needed to improve the national reach of therapeutic services.**

## Strategic Plan 2011 to 2014 adopted

CARI adopted a new plan entitled *Building on Strong Foundations: Next Steps for CARI* and identified six new core objectives as highlighted in the Chairman's Introduction. In view of the uncertainty around in terms of resources a shorter, four year time frame, ending in 2014, was selected.

## Improving CARI's Fundraising mix

In 2011 CARI invested in a major way in improving our fundraising mix and at the end of the year was well on the way to implementing changes and improvements.



## ig the ation

Continued to develop organisational capacity and updated its HR Policies Handbook. Adare provide our HR assisted us in this. updated our ternity Benefit scheme and ended our policies Online Media and health and Safety two premises have dated and actions er actions decided.

## Membership of the HSE Voluntary Forum and Ferns 4

CARI participates in the regular networking events initiated and chaired by Gordon Jeyes; and this forum is invaluable in keeping the NGO's briefed on the rapid changes afoot in transferring budgets and structures from the HSE to the Children and Family Support Agency due to commence operations in 2013.

## The Financial Environment remains challenging

Core statutory funding declined again in 2011 but this was offset by a one-off grant from the Ryan Report special funding allocation. Our own fundraising increased but this was due largely to capital grant income for the training room in Limerick and the underlying profile was one of reducing income from the state and modest growth in fundraising. We ended the year with a net loss (when accruals are taken into account). The prospects for 2012 is for further cuts in statutory funding from 5% to 12.5%. It is hardly surprising that we are now in mid 2012 sadly cutting back services again.

## CARI has seen more child clients and received more calls

The clinical report that follows will show that despite declining resources and within shorter

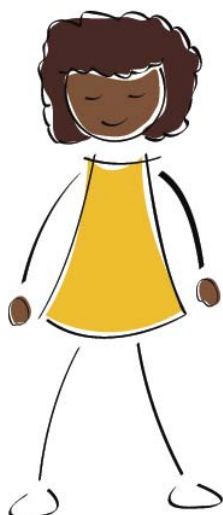
hours, our staff have been able to help more children and families affected by child sexual abuse. Great credit is due to the National Clinical Director and the whole Clinical team, the Helpline team and all the support and fundraising staff. Fundraising is reported later also and following two years of dramatic decline there was a modest increase in 2011.

My thanks to all our staff, volunteers, CE trainees and the general public for their ongoing support and the children whose courage is our inspiration.

Mary Flaherty,  
CEO



*Dr. Niall Muldoon, Minister Frances Fitzgerald, Mary Flaherty CEO at the Launch of the 2010 Annual Report in the Mansion House, Dublin.*





## Therapy Statistics - 2011

### Limerick (Inclusive of Cork) – total number of appointments given

(Therapy and Advice Appointments) = 1258 (3% increase on 2010)

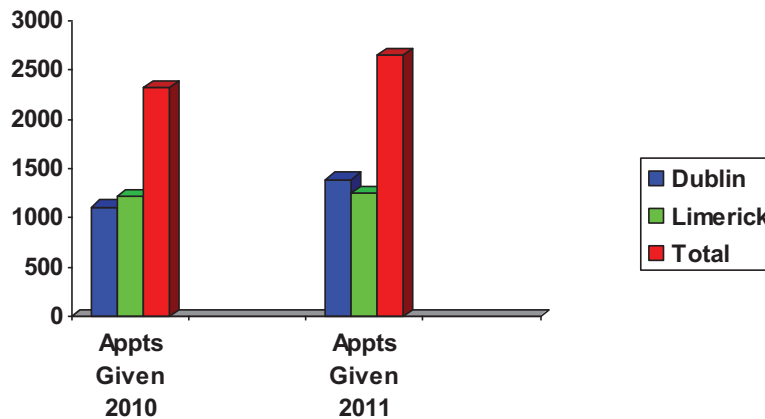
(Limerick = 832 – no change; Cork = 426 – up 12%)

Dublin – total number of appointments given

(Therapy and Advice Appointments) = 1392 (21% increase on 2010)

Total for 2011 = 2650 (13% increase on 2010)

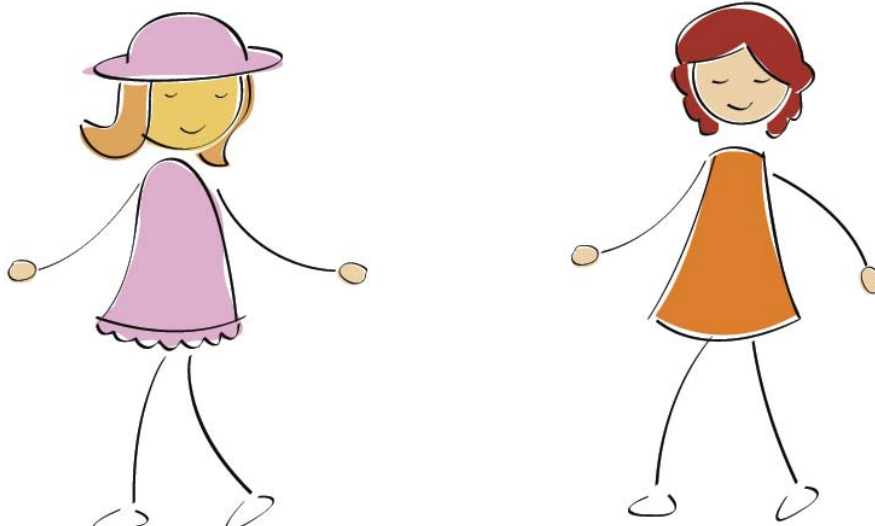
### Therapy Hours- Dublin & Limerick\*



\*Limerick figures incorporate statistics from our Cork Office

*“Aside from the great strides that my daughter made under the guidance of you both, the clarity and understanding that my wife and I have gained from you has been instrumental in allowing us to cope with what befell us. From the bottom, middle and top of our hearts, thank you for everything you have done.”*

*(Parent No. 1)*



## 13% Increase in Therapy Hours Offered

The number of therapeutic hours offered across 2011 has increased by 13% over 2010 and shows a 7% increase from 2009 so that we have managed to recoup the hours lost last year following the reduction, by one, of our therapy team. Therefore, despite extremely difficult resource issues and reduced staff numbers, we have provided over 2,650 hours of therapy for the children and families in need of our services.

## Dublin Office

The large jump in therapeutic hours in Dublin is most noteworthy as it means that, for the first time ever, CARI have provided more than 1,200 hours of therapy in the capital city – a very significant achievement. It also means that within the past two years, there has been an increase of more than 50% in the level of therapy available within the Dublin office – a great credit to all concerned. The relationships built up with the Social Work teams within the Greater Dublin Region, over the past number of years, have led to CARI being a much valued part of the system (albeit Independent) which provides help and support to the families affected by child sexual abuse. This achievement has also been aided by the retention, on a short term contract, of an additional therapist who had originally been hired to cover maternity leave only. However, due to funding issues we expect to lose that therapist in 2012.

## Cork & Limerick Offices

We are particularly pleased with the increase from the Cork office, which can be partly explained by a better relationship with the local HSE areas; leading to improved referral numbers to the Cork CARI centre on Pope's Quay. When we factor in that this office is only manned, by two very dedicated therapists, two days a week and there has always been a waiting list for their services, it is clear to see that there is a very strong demand for this facility in Cork.

The Limerick office has dealt with working on a skeleton staff for most of 2011 and they deserve great praise for maintaining the same level of output as last year – not an easy thing to do with stretched resources.

## Thanks

I would like to take this opportunity to thank all of our Therapists who have each done so much to help provide an opportunity for change and growth to the children and families we serve. They work tirelessly to ensure that each child who attends us, as stated in the CARI Philosophy, “[will] grow into adulthood defined not by their abusive experiences but by their individuality and creativity”.

*“Words seem inadequate to express our gratitude, but thank you for listening without judging and for giving us the skills to cope through a difficult time.”  
(Parent No. 2)*



## BLENDING FAMILIES

The world of “Old Ireland” (up to only 15 years ago) appears to be receding into the mist. That is, a time when, in 95% of families, all the children in a family were fathered by the same man and even where a separation occurred the children were able to rely on regular access to both parents. The experience of CARI over the past number of years has been of the effect on children of the “New Ireland” where Blended Families are becoming more and more plentiful.

Blended Families are those where children from different biological parents are brought together as one family under the care of either a single biological parent or a single biological parent and a new partner. Thus, it is not uncommon to have a new family unit with 2 children born to the male caregiver in this unit and 3 children born to his new partner; as well as another child who is the product of their union. At its simplest this unit could have biological father, biological mother who will have access to their children; most complicated there could be separate biological parents and 5 children in this blended family.

In this context, sexual abuse is difficult to recover from. The consistent indicators of a strong, stable relationship (Family, Foster Family, Respite) are that we place great store on the parents/caregivers when we seek help for their child – we always want to know who the parents/caregivers/key people are so that the child knows their primary carers are as engaged in their recovery as they are. This gives a sense of safety and confidence to the child while also allowing the parent/caregiver to discuss and work

through their own issues as a result of their child suffering sexual abuse. This system has worked very well and provides a level of consistency across the week that a single stand alone hour of therapy could never do in a child's life.

Issues are even more muddled if the abuse comes from within the Blended Family i.e. a “step brother” abuses his “step sister”. The abuse of a girl by a boy, who is living under the same roof, and whom she is told by her biological parent to consider as “being like a brother” can be extremely traumatic and exceptionally difficult to recover from. This pseudo-sibling relationship can often be seen as a barometer of the success of the union of the two adults and as such any disturbance to it can be seen as damaging their relationship and is therefore

frowned upon. In a situation like that, it can be almost impossible for the girl to voice fear and loathing at the abuse being carried out in case she is not believed and accused of lying up to cause trouble for her, even if the child is not believed but can be huge because of the break up of this substituted family and the resulting pain and distress to the child's parent. Most children will stay silent about the abuse if “the family” – this is especially true of many older teenagers who do not want to continue abusing.

There is no single answer to this problem. It is important to place our focus on the concerns in the public domain. There are factors we know about that can keep children safe within a family and they are a) when they are supported by loving adults, b) there are reasonable and



consistent boundaries for their behaviour and c) there is a level of trust and communication between child and adult that ensures the child can come to the adult with any problem they encounter. In addition, the child should be provided with sufficient knowledge about his/her body to know what is private and not private, to know what are safe boundaries around touch and behaviour and to know who to tell if someone ever makes them feel uncomfortable around their body. This imparting of knowledge and guidelines needs to be done at an age appropriate level and returned to regularly as they mature and hit the different stages of physical development because the rules change and their level of responsibility will change with maturity. These ideas should help prevent any abusive or inappropriate behaviour.

However, if something concerning does happen, we believe that it is vital that we give our children the confidence and strength to speak up if they feel uncomfortable with the behaviour of another, allowing them to trust that the system will help repair any harm done to them. It is vital that parents let them know that they will believe them if they tell. The HSE had a publicity campaign some time ago which stated that “Parents Who Listen, Protect” and this needs to be re-enforced even more with new Blended Families. A parent whose child knows they will always be there to protect them will give that child a confidence to speak up and disclose if necessary.

## **INTERGENERATIONAL ABUSE – WE HAVE NOT BROKEN THE CYCLE YET!!**

It is our experience that while children are learning earlier and better to speak up about any abuse they are experiencing (to a Doctor, Teacher, Friend, Parent) it is still very difficult for some families to protect their child from someone they may already know has abused before. That is, many parents will

still leave their children in the care of their own parents or siblings even if they have suffered sexual abuse at their hands many years previously.

There is a distinct blurring of the lines of responsibility around this issue because many victims (who have never disclosed their abuse) go on to become parents with the express desire of ensuring nothing bad ever happens to their children. However, because they have not dealt with, or even fully acknowledged their own hurt and pain, they may often not recognise the risks that face their children while leaving them in the care of their relative. This is compounded by the lack of disclosure because it means that even if the victim is very clear that relatives should not be caring for their child the real reason for the belief cannot be voiced and so excuses are made, but often arguments are lost on the grounds of those flimsy excuses. Thus, their offspring may end up being abused by the very same person who had hurt and damaged them – Intergenerational Abuse carries on.

However, despite CARI still seeing a lot of these cases, we have to acknowledge that by the very fact they are coming in our door then the Intergenerational silence is being broken and the cycle has a chance to be disrupted. With the co-working we do here we can also assist the parent who was a victim to better help their child through this pain. We might also support them in sourcing therapy for themselves, if appropriate, so that they can have their own safe space to process all those years of silence and hurt visited upon them by the same abuser as hurt their child. Thus, by coming forward in 2011 and being believed by their parent this child could easily have helped not only themselves but their parent and any future children who might have been vulnerable to abuse by their relative.



## HELPLINE

*“It is the province of knowledge to speak  
and it is the privilege of wisdom to listen”  
(Oliver Wendell Holmes)*

### Helpline Calls in 2011

	2011	2010
Completed Calls	1151 (5% increase)	1102
Silent Calls	129 (12% increase)	114
Missed Calls	150 (25% decrease)	202
TOTAL CALLS	1430 (1% increase on 2010)	1418

### Primary Concerns in 2011

	2011	2010
Intrafamilial	398 (6% decrease)	422
Extrafamilial	342 (42% increase)	200
Sexualised behaviour	212 (57% increase)	122
Rape/sexual assault	98 (20% decrease)	123

In 2011 CARI Helpline responded to 1430 calls to our helpline, a one percent increase on 2010. The main aim of this service is to support parents, carers and professionals with concerns around child sexual abuse and sexualised behaviour. We are delighted that we have again managed to reduce the number of missed calls to our service, and this time by a massive 25%, so that we can be sure we are better serving those who need to talk about or report possible risks to children. In fact, over the past two years we have reduced our missed calls by nearly 60%, showing the huge work that has been done within the service to restructure our work rota so that there are fewer possibilities of phones not being answered.

A completed call is one where there is a spoken element between the caller and a Helpline staff

member. This is the core of our work and we are delighted, for the third year running, to show an increase in these calls. In 2011 we have completed 5% more calls than 2010 and thus more individuals have been facilitated in expressing their concerns and gathering advice around issues of child sexual abuse – that is a very positive and tangible contribution to the reduction of the number of children at risk in Ireland.

*“Fantastic service that has helped me  
hugely and you should be complimented  
for doing this very important work”  
(Parent Caller 1)*

### Caller Concerns

The Primary Concerns noted above show the issues that people bring to the helpline most often and, the most remarkable statistic is the huge increase in calls around Extrafamilial abuse. This indicates a shift from previous years where issues relating to Intrafamilial abuse were always, by far, the biggest reason for calling. The term Extrafamilial suggests that the person who is alleged to have carried out the abuse is not a family member but is acquainted with the child through the neighbourhood, school, family friendships, sports club, baby sitting etc. Thus, this increase taken alongside the huge figures in the Intrafamilial category show very clearly that a child is still most at risk within their own circle of family, friends and neighbours. This message needs to be continuously reinforced.

*“I felt so at ease knowing that we  
were being so well taken care of”  
(Parent Caller 2)*

### Sexualised Behaviour in Children 12 years and Under

Our statistics also show, once again, that sexualised behaviour in children is one of the main concerns presented on our helpline – as a presenting issue it grew by 57% this year. Parents and professionals alike have stated that this presenting behaviour in children is both shocking and frightening.

*"I taught my child about stranger danger;  
I never thought I should warn him about  
other kids."  
(Parent Caller 3).*

In the past, we would have said that a child presenting with sexualised behaviours is very likely to have experienced sexual abuse. However, that is now not the case as we live in a society where, through a vast array of mobile devices (with internet connections) children have ready access to a dizzying array of inappropriate material. And it is because of this that CARI, in 2010, collaborated with Kieran McGrath to publish a booklet called ***Understanding & Managing Sexualised Behaviour in Children***. This booklet can be downloaded FREE from our website [www.cari.ie](http://www.cari.ie) and with over 400 downloads in 2011 it clearly continues to prove a valuable asset to both Parents and Professionals as a starting point to understanding the nature of sexualised behaviours in children.

The Helpline team has grown over the last few years thanks to the CARI Initiative, which began in 2008 and now boast a compliment of 10 trained and motivated members. These individuals are always there to listen and offer support (when appropriate) call concerns around sexualised behaviour in children.

I want to compliment all of our staff, paid and voluntary, for these excellent statistics and their huge achievement in happen. Our CARI Helpline stated that she "quite privileged to be in a position to support the caller helpline". That reminds caller has probably reached a crisis point in

their lives when they seek out our helpline and unless they feel an appropriate, measured and non-judgemental response from our staff they will not be able to garner the information and support they need to cope with that. It is these callers who have to work through the crisis and help the child in question, but it is a most satisfying reward that our Helpline staff can aid them in that journey. It is for this work, the reality behind the statistics, that I truly commend our Helpline Team.

### **Court Accompaniment and Support Service (CASS)**

This service was set up to provide support and assistance to any child (and their family) who is being called to court as a witness, regardless of the crime. We provide assistance by accompanying the child and family to the court, in advance of case date, with a view to familiarising them with the court environment & interview suite. We also assist the child, on a practical level, by explaining court procedure with the help of age appropriate literature. Where necessary, we will clarify court

the child understands what we will attend court with their family and provide emotional support before, the court proceedings.

*support of the CASS  
I stayed calm and at ease."  
(Mother of a CASS client)*

In 2011 we helped 12 children and teenagers who were providing evidence to the Irish Court's decision to this care we also provided emotional support to the families of those children of which there were 17 and 24 siblings. The increased workload in the service is highlighted by the fact that in 2011 there was a 59% increase



in our calls (incoming and outgoing) and a 57% increase in our pre-trial and trial accompaniments from 2010.

Thanks to the ongoing training events and overall support from our funding group, The Commission for the Support of Victims of Crime, CASS has had the opportunity to increase its multi-agency profile. Creating and maintaining connections with similar agencies has resulted in a more efficient working service. CASS is looking forward to maintaining and strengthening these vital relationships in the years to come. We would like to take this opportunity to thank all those who have made referrals to us in 2011, these include many different individuals and organisations such as HSE Social Workers, St. Louise's Unit in Crumlin Childrens Hospital, An Garda Siochana, Victim Support at Court (V-SAC), and the Crime Victims Helpline.

*“The contact from (CASS Officer) was so very much appreciated. It was very regular, very supportive and very clear.”  
(Mother of CASS client)*

#### FERNS 4

Over the past 5 years CARI has been represented on the Ferns 4 Committee which was charged with examining the assessment and the needs of children who have been abused and their families and recommendations concerning requirements.

This committee was re-constituted and is now meeting on a monthly basis with a focus of generating a clear, comprehensive plan for the provision of assessment and therapy to children and young people affected by sexual abuse. The committee contains representatives from the Garda, Medical Forensic

National Leads, HSE Social Work, CARI, HSE Psychology, St. Clares, St. Louises. This level of expertise has generated strong momentum so that it is hoped that within 2012 there will be some new and exciting developments that will bring new energy and vigor to the way child sexual abuse is dealt with in this country. It is CARI's aim to ensure that all new ideas and recommendations are built upon a Child Centred ethos and that resources DO NOT dictate the shape of this new service which will be under the leadership of Mr. Gordon Jeyes in the Child and Family Support Agency.

#### Research carried out in CARI – Adolescents Experience of Change Post Abuse

CARI has no budget for research at present but we are always seeking opportunities to collaborate so that we can assist in getting good research conducted on our behalf. In 2011 we saw the completion of one such study which looked,

uniquely, at whether there might be some positive changes, over time, in individuals who experience sexual abuse as a result of their abuse.

The research was conducted by Dr. Eileen Duggan (TCD), a Lecturer in Training, and was titled - **“It's never ...but it did”: 'How experience change in sexual abuse'**, completed in 2011. It involved interviews with six young people (aged 16-20 years old) who had experienced sexual abuse and their families. This research aimed to explore adolescents' subjective experience of change following sexual abuse and to allow for the identification of processes of positive change. The



findings suggested that there is a presence of positive as well as negative change within adolescents' narratives and both of these are an important part of the individual's experience.

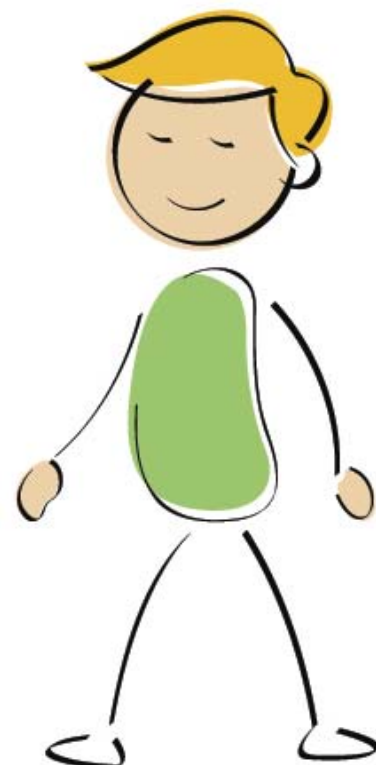
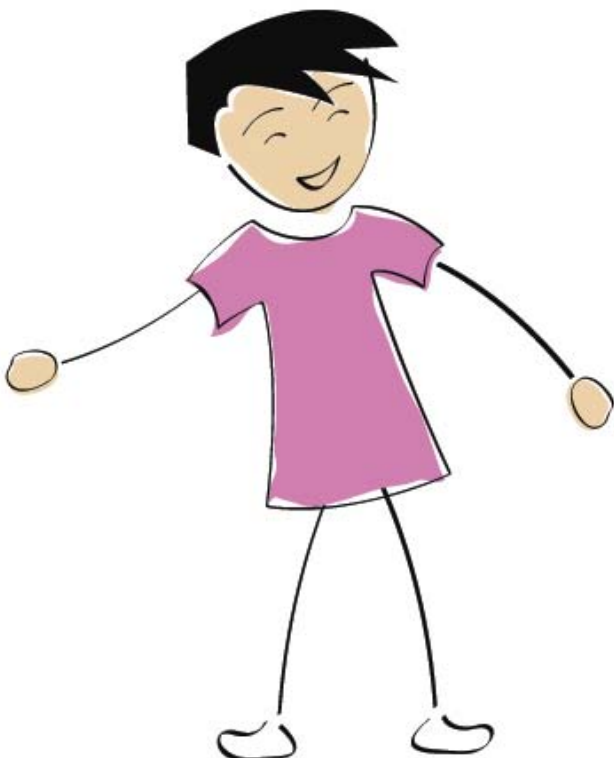
Therefore, as a therapeutic agency, CARI need to be strong in stating that such a traumatic experience can also lead to positive changes, over time. There has been an overemphasis on the negative outcome of such abuse with too little mention of the ability of children and adolescents, with the appropriate support and help, to get through that trauma and find themselves stronger and better able to cope with what life throws at them.

### **Outreach**

Despite our limited budget and slim resources, CARI continues to offer outreach talks and training to various organisations and in 2011 we managed to

reach over 600 people through talks at a variety of settings including the Dublin Rape Crisis Centre, National Schools and Dublin Institute of Technology.

*Dr. Niall Muldoon  
National Clinical Director*







## Introduction

CARI's fundraising teams in Dublin (Carole Moran and Patricia Townsend) and Limerick (Anne Byrnes and Nora O'Connor) along with CARI's C.E. Staff would like to say a big thank you to all who contributed in whatever way to supporting our events and appeals in 2011.

We would also like to acknowledge our providers of specialist advice and services:

- Adare HRM
- Sattal
- Orpen Franks Solicitors
- Frank Richardson and Associates
- Catherine Smith McKiernan
- Community Counselling Services
- Integrate IT

Mary Flaherty - CEO

## CARI SUMMER LUNCH & FASHION SHOW - DUBLIN

Miriam Ahern hosted the CARI Summer Lunch in Cruzzos Restaurant, Malahide on the 13th May 2011. The afternoon began with a champagne reception sponsored by Gilbert & Wright of Malahide, followed by a wonderful Fashion Show. Guests enjoyed a gourmet Lunch followed by live entertainment by 'On the Edge'. The charismatic Alan Hughes from TV3 was the MC for the afternoon.



## SUMMER STYLE LUNCHEON - LIMERICK

On Friday 20th May 2011, the Cornstore Restaurant, Limerick, hosted a Summer Style Luncheon in aid of CARI. This was a fantastic event and very successful. After a fabulous day an after-party took place in Aubars from 6pm, with live jazz entertainment and complimentary cocktails on arrival. Again, a very successful event and CARI is very grateful for your ongoing support.

## CARI ANNUAL BALL

Our Annual Ball took place on Saturday November 19th at The Shelbourne Hotel hosted by patron Miriam Ahern. The evening commenced with a champagne reception kindly sponsored by M&S and

entertained by the Halleluia Gospel Choir, after which guests enjoyed a four-course meal with delectable wines. Alan Hughes was the MC for the evening. In line with the Supper Club theme on the night guests were entertained by Frankly Sinatra with dancing until the early hours of the morning. Welcome to new committee member Roz Flanagan and thanks as ever to the remarkable Tara O'Connor.



Limerick CARI Ladies Summer Style Luncheon, Photos by Laur Ryan of [www.ilovelimerick.com](http://www.ilovelimerick.com)

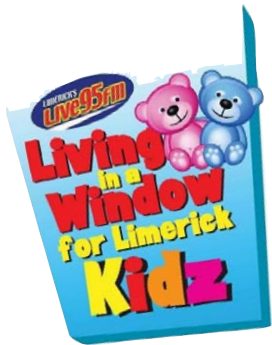
4. 3rd from left, Olivia O Sullivan, Anne Byrnes, Celia Holman Lee and models.

5. Anne Byrnes and Rich Anthon.

1. Alan Hughes, Sinead Desmond and Karl Broderick
2. Cecilia Ahern, Miriam Ahern and Georgina Byrne
3. Lunch 2011 Susan Craddock and Hazel Kanewaren

6. Karl Broderick and Alan Hughes
7. Gavin and Orlaith Duffy
8. Derek Mooney and Lisa Wallace
9. Cecilia Ahern, Miriam Ahern and Georgina Byrne





## LIVING IN A WINDOW RAISES 50K FOR LIMERICK CHILDREN

On the 14th November 2011, the total raised by Live 95FM's *Living in a*

*Window for Limerick Kidz* breached the €50,000 mark which was divided between the Children's Ark and CARI Limerick. Donations poured in over the week as the people of Limerick responded to the call to support the Children's Ark and CARI Limerick.

Live 95FM's JP Dillon spent 95 hours living in the window of Brown Thomas while members of the public organised their own fundraising events to contribute to the overall total.

## THE HALLELUJIA GOSPEL CHOIR

Have supported us continually since 2008 and who have chosen us as their Charity of the Year for a fourth year in 2012. We not only benefited from their Christmas concert, attended by the Lord Mayor, this year they also appeared at our Ball wowing the attendees whom they escorted to their tables with wonderful tunes.



## FLORA WOMEN'S MINI MARATHON – DUBLIN

Another great day, Monday 6th June 2011, for CARI with teams of women turning out to run,

jog or walk in aid of CARI. Ciara O'Callaghan, aka Yvonne Doyle, from Fair City again was the face of CARI for this event. A huge thank you goes to her, to all our participants and to The Duke Bar in Duke Street for their on-going support over the last six years in hosting our meet and greet.



## WOMEN'S MINI MARATHON - Limerick

On Sunday 16th October 2011 our participants ran, walked or in some cases jogged to the finish line on behalf of CARI. This year we particularly want to thank our repeat participants who raised much needed funds on behalf of CARI. A big thank you goes to all who took part on our behalf.

## THE GREAT LIMERICK RUN

On Sunday May 1st 2011 once again was filled with runners, joggers and walkers from far and wide. Limerick was the designated European City of Sport in 2011. The 3 races included a fully certified marathon, a half marathon and a 6 miler. A huge thank you to those who participated on behalf of CARI.

## CORPORATE DONOR D & B

D&B (NYSE:DNB) is the world's leading source of commercial information and insight on businesses, enabling companies to Decide with Confidence for 170 years. In December 2010 D&B ran a customer initiative and donated money to CARI in early 2011 for each questionnaire that had been completed. A cheque for €3,846 was presented to CARI in March 2011 by Chris Laws of D&B.





## IRISH GAMES ASSOCIATION

The Irish Games Association as part of their ongoing commitment to charitable giving, a core element of their activities, once again made a donation to CARI. Special thanks to all their members.

## JLS CONCERT IN THOMOND PARK

On the 26th June 2011 JLS took to the stage in Thomond Park and wowed crowds of all ages. CARI would like to thank both Pat O'Sullivan from Masterchef and John Cantwell of Thomond Park who allowed CARI staff and volunteers to fundraise within the grounds on the day.

## HOLISTIC & CRAFT FAIR

In 2011 June Byrne ran a holistic and craft fair in aid of CARI in Co. Cork. This was June's second year running to donate this money to CARI with another fair already organized for 2012. The event was widely advertised on local radio and in newspapers which helped immensely with creating awareness of CARI.

## MOTORBIKE RUN IN AID OF CARI

A great big thank you goes out to Andy, Len and Tony for the Motor Bike Run that they held for the second year running and raised much needed funds for our Limerick centre.



## DIT AUNGIER STREET BUSINESS SCHOOL

Thank you to Tom Cooney and his Business Classes of 2011, some of whom once again organised various events in aid of CARI. The students undertook to organise events from scratch with a little help from CARI staff, learning valuable skills in marketing and PR and raised much needed funds for CARI on the way.



## CHARITY EXHIBITION DARTS MATCH

On Friday 9th September 2011 a charity Exhibition match took place, featuring John Pat in Slattery's Bar, Kildimo. The event was held to raise funds for CARI's Limerick therapy services. Thank you to all who attended.

## CASTLETROY LION'S CLUB

On Thursday 13th October 2011 the Castletroy Lion's Club presented a Variety Concert in Milford Parish Church in aid of CARI and Milford Church Fund. A fabulous evening was had by all and it helped raised much needed funds for CARI.

## CONNEMARA'S WATERSPORTS DAY 2011

Thank you to Patricia Keane and her committee for nominating CARI once again as the recipients of Watersports day which was held on Sunday August 14th. It was a great family day out – activities included scuba-diving, kayaking, boat and pony rides and a host of other exciting events.



## EASTER BASKETS

We placed 90 Easter Baskets in hotels, bars, shopping centres and post offices throughout Dublin and Limerick. A big thank you to all who participated in this Annual event.

## GALA CHARITY PANTO NIGHT

The CARI Charity Pantomime night was held on the 21st December 2011 in the Tivoli Theatre. 'Sleeping Beauty' written by Karl Broderick was a complete sell-out for CARI. Alan Hughes, who returned to the stage in the role of Sammy Sausage, was delighted to meet all our supporters on the night.



*Alan Hughes and Karl Broderick*

This event will now be an annual event and CARI is especially pleased to have a children's activity in its events calendar.

## DCU MUSIC AND GLEE CLUB

Members of both these clubs sang and performed for CARI in Omni Shopping Centre in December 2011. These clubs have nominated CARI as their chosen charity for 2012/13

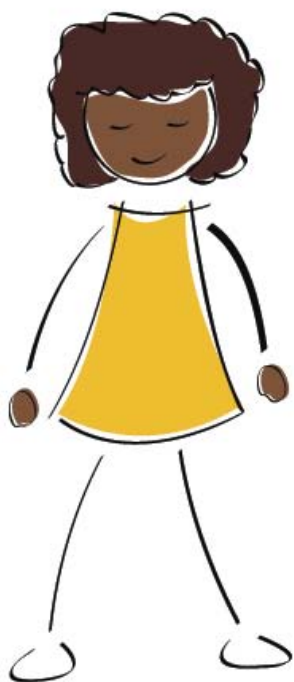
## CHARITY SHOP IN AID OF CARI

In late 2011 Mr. Paul Campbell of Rush approached CARI with regards to opening a charity shop within the region. The shop has been run, very successfully, since then and CARI receives a fee and share of profits.



## EUROSPAR CHARITY OF THE YEAR 2010/2011

Our EUROSPAR Charity of the Year partnership ended in April 2011; they raised the remarkable sum of €120,000 euros. CARI is now urgently seeking a new partner.





While CARI focuses on service provision, it also strives to campaign on issues related to child sexual abuse. CARI issues press releases on related topics and contributes to radio and newspaper coverage and government legislative consultation processes. Some of the issues we campaigned on in 2011 are:

- Children's Referendum
- Call for an Independent Legal Representation for Victims in child sexual abuse cases.
- The Murphy Report into the Catholic Archdiocese of Cloyne
- Issues of Increased Inappropriate Sexualised Behaviour in Children

## Ros Na Rún Storyline

*Ros na Rún*, the TG4 soap, highlighted the tragedy of child sex abuse in a storyline with one of their best loved characters, Gráinne (Bridín Nic Dhonncha) at the hands of Breandán (JD Kelleher). CARI supported the *Ros na Rún* storyline and the charity helpline number and website details were provided in the closing credits of all related broadcasts.



In the storyline, which gripped fans of the popular drama, Gráinne accused her new radio boss Breandán of being the man who once 'groomed'

her for a summer during her childhood, before attempting to sexually abuse her. CARI welcomed the exploration of a child sexual abuse theme in *Ros na Rún* as it helps dispel the misperception that child sexual abuse is a historical problem – it showed clearly that is still a current risk and must be acknowledged as such. All CARI's clients are aged between 3 and 18 years old, indicating clearly how current the abuse is and how vital it is that the public recognise this.

## CARI Website [www.cari.ie](http://www.cari.ie)

In 2011 12,156 visitors accessed our site looking for information, availing of services and seeking support. 79% of these were new visitors. Demographically, nearly 60% of our website hits are from Dublin, followed by Limerick (5%), Cork (3%) and Galway (2%). The most viewed pages were CARI Home Page, followed by About Us, Contact Us, Therapy and Training.

## Facebook

[www.facebook.com/caripage](http://www.facebook.com/caripage)

## & Twitter

[http://twitter.com/#!/CARI\\_Foundation](http://twitter.com/#!/CARI_Foundation)

In 2011, we increasingly used Facebook to proactively connect with our supporters and the public. We recently welcomed our 1,000th Facebook friend. Facebook enables us to promote events, upload video content and disseminate CARI information/news. We hope Facebook will help increase our volunteer base and plug into an existing audience that has similar interests. Twitter is a valuable marketing tool and we use it to drive traffic to our website, raise awareness of CARI, and promote news and content. The usage for 2011 was 695 Tweets; 140 Following; 309 Followers.

# Statement of Accounts

## For year ended 31st December 2011

	2011	2010
<b>Income,</b>		
Donation, Grants, Services		
Total	€735,923	€777,137
<b>Fundraising Events</b>		
<b>Total</b>	€184,762	€166,248
<b>Expenditure</b>		
National Expenditure	€959,835	€942,720
<b>Total</b>	€959,835	€942,720
Deficit/Surplus on Ordinary Activities	-€39,150	€665
<b>Balance Sheet</b>		
As at 31st December 2010		
<b>Fixed Assets</b>		
Tangible Assets	€1,972,847	€1,972,847
<b>Current Assets</b>		
Bank	€95,885	€129,214
Debtors & Prepayments	€2,601	
<b>Total</b>	€98,486	€129,214
<b>Current Liabilities</b>		
Creditors (Amount falling due within one year)	€211,937	€159,983
Net Current Assets/Liabilities	-€113,451	-€30,769
Total Assets less Liabilities	€1,859,396	€1,942,078
Creditors (Amounts falling due after more than 1 year)	€871,934	€915,466
Grants were received from the following		
<b>STATUTORY</b>		
HSE *	€322,386	€267,659
Family Support Agency	€152,400	€169,300
Department of Health and Children National Lottery		€40,000
Commission for the Support of Victims of Crime	€15,000	€30,000
FAS	€16,060	€16,542
<b>Total</b>	€505,846	€523,501

\* Includes €65,000 from Ryan Report Funding (one off)



## **NON STATUTORY**

J P Mc Manus Golf Pro-Am (2010)	€89,070	
Elsevier	€10,756	€11,461
Civil Service Charity Fund	€5,000	
Total	€104,826	€11,461

CARI also benefits from FAS support via our two CE schemes and JI part-funding for five posts in CARI. These funds are accounted for separately to FAS and have a different accounting year. Only a net material grant of €16,060 is visible in our accounts.

The value of the FAS support is substantial as it helps subsidise core running costs in Limerick. The gross turnover of the Limerick CE scheme in the year to Sept 11 was €180,088 and the figure for Dublin was €234,503. The gross contribution to CARI from JI in 2011 was €83,000 for Limerick and €45,760 for Dublin.

### **Company Solicitors**

Rory Benville & Co., Riverview House, Seapoint, Bray, Co. Wicklow

### **Auditors**

Kilbride Marshall & Co., 12 Joyce Avenue, Foxrock, Co. Dublin

### **Registered Office**

110 Lower Drumcondra Road, Drumcondra, Dublin 9

### **Company Number**

Registered Number: 148760 Charity Number: 9491

### **Board Members**

Richard P Treacy – Chairman

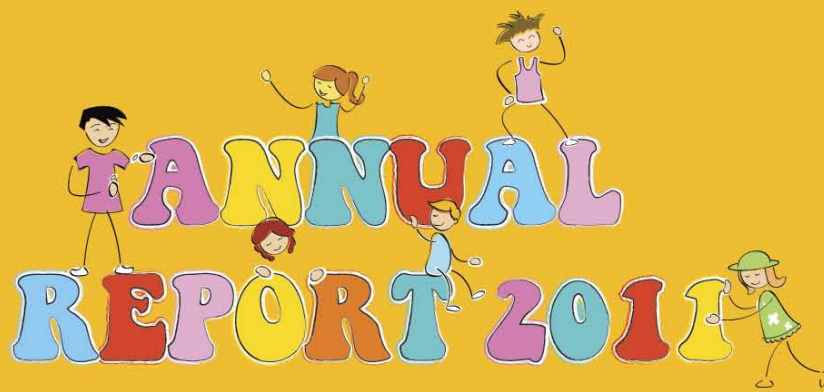
Ronan Boylan

Peter Quinn

Myra Barry(Resigned May 2011)

Noel Hughes

Colman Duggan



# ANNUAL REPORT 2011



**CARI National Office: 110 Lower Drumcondra Road, Drumcondra, Dublin 9.  
Tel: 01 803 8529 \* Fax: 01 830 6309 \* Email: [info@cari.ie](mailto:info@cari.ie) \* Web: [www.cari.ie](http://www.cari.ie)  
CARI National Helpline 1890 924 567 \* [helpline@cari.ie](mailto:helpline@cari.ie)**